

*Locelain*TM
Sintered Stone

*Locelain*TM
Sintered Stone

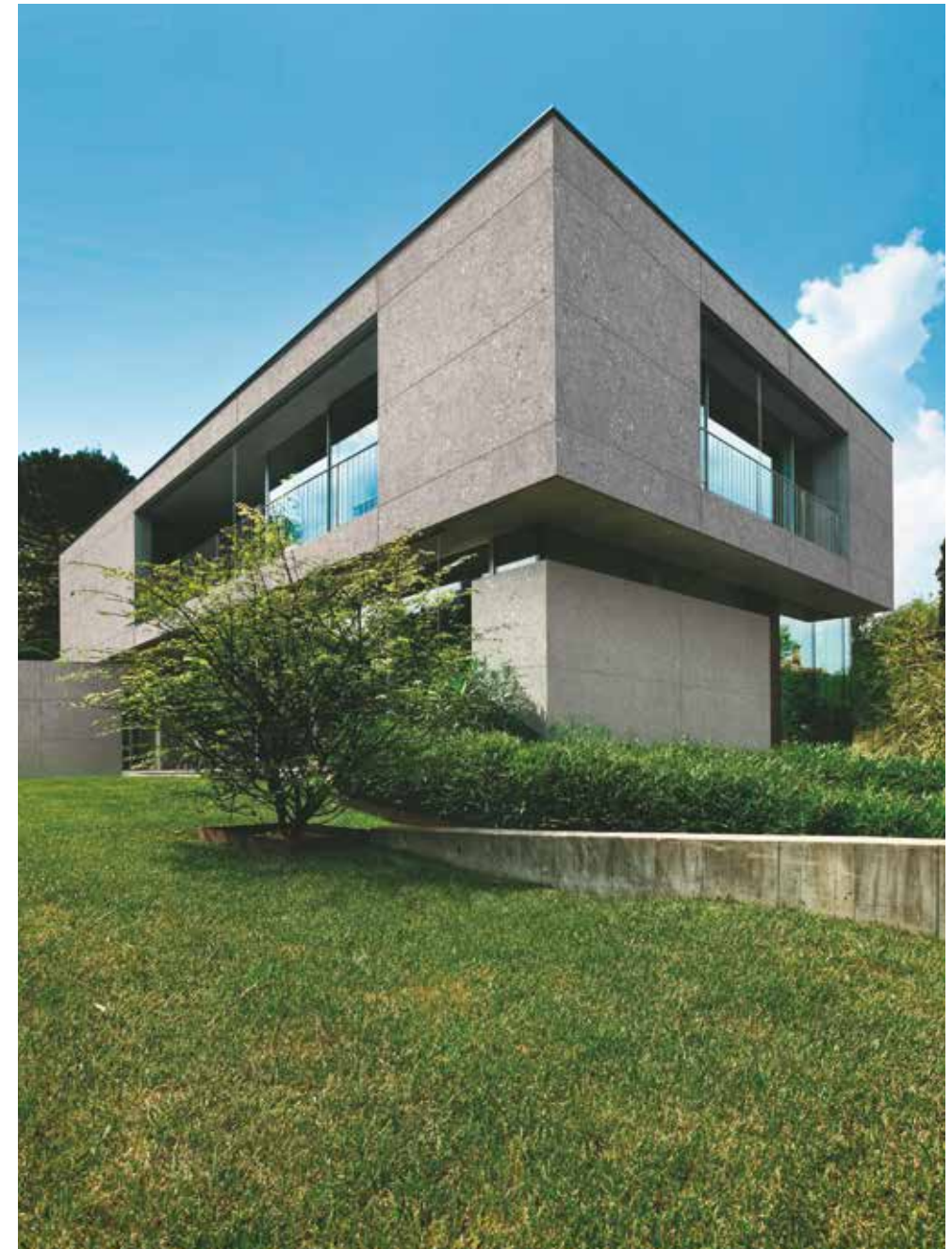
ULTRA-COMPACT SURFACE

Locelain[™]
Sintered Stone

PREMIUM NATURAL SINTERED STONE, LOCELAIN

Achieve the best of style and quality
with Locelain[™] Sintered Stone.

With colors ranging from stunning to subtle,
Locelain is an aesthetic, versatile and durable surface
that performs in any interior and exterior applications.



WHY LOCELAIN?

Locelain™ Sintered Stone is available in an extensive range of colors and sizes that provide exciting design possibilities for both residential and commercial applications. With its improved aesthetics and hygienic advantages, Locelain™ is the preferred product for interior and exterior wall cladding, flooring, and countertops in all kitchen and bathroom projects or any high-traffic areas that require additional durability and functionality.



100% Natural

Since Locelain™ is 100% natural and resin-free, it does not release any harmful substance into the environment.



Resistant to UV rays

Due to its natural composition, Locelain™ color and surface will not degrade when exposed to sun light or other extreme weather conditions



Resistant to heavy impact stresses

With a high shear rate, Locelain™ is extremely durable in commercial spaces or any other busy work environment



Waterproof

The low porosity of Locelain™ makes the surface waterproof and liquid-resistant with an absorption level near zero.



Easy to clean

Locelain™ doesn't need sealing due to its non-porous surface, making it a low maintenance material that is resistant to chemical cleaning agents.



Hygienic

Locelain™ is non-porous, so it keeps the surface resistant to any bacteria and mold growth



Resistant to high temperatures

Locelain™ does not burn in contact with fire or release smoke and toxic substances



Approved for food preparation

Its hygienic properties make Locelain™ the perfect food handling surface in both residential and commercial interiors



Resistant to scratches

Because it is made up of natural materials using extreme heat and pressure, the hard surface of Locelain™ is highly resistant to scratching and abrasion.

Locelain and Natural Stone

Locelain™ Sintered Stone provides both functional and aesthetic qualities that are unobtainable with natural stone. The extraordinary properties of Locelain™ make it the perfect solution for floors, walls, countertops, and furniture.

Distinction	Locelain	Granite	Marble
Flexural strength	□ □ □	□ □	□
Surface hardness	□ □ □	□ □ □	□ □
Acid resistance	□ □ □	□ □	□
Alkali resistance	□ □ □	□ □ □	□ □ □
Stain resistance	□ □ □	□ □	□
Flammability	□ □ □	□ □ □	□ □ □

□ □ □ Excellent □ □ Good □ Fair

01
LOBBY
Statuario L
SL010



02
BATHROOM
Statuario L SL010



03
LOUNGE
Statuario L SL010



05
KITCHEN
Calacatta L CL015

04
BATHROOM
Calacatta L CL015

06
BATHROOM
Calacatta Snow
CS013



07
KITCHEN
Calacatta Snow CS013





08

BATHROOM

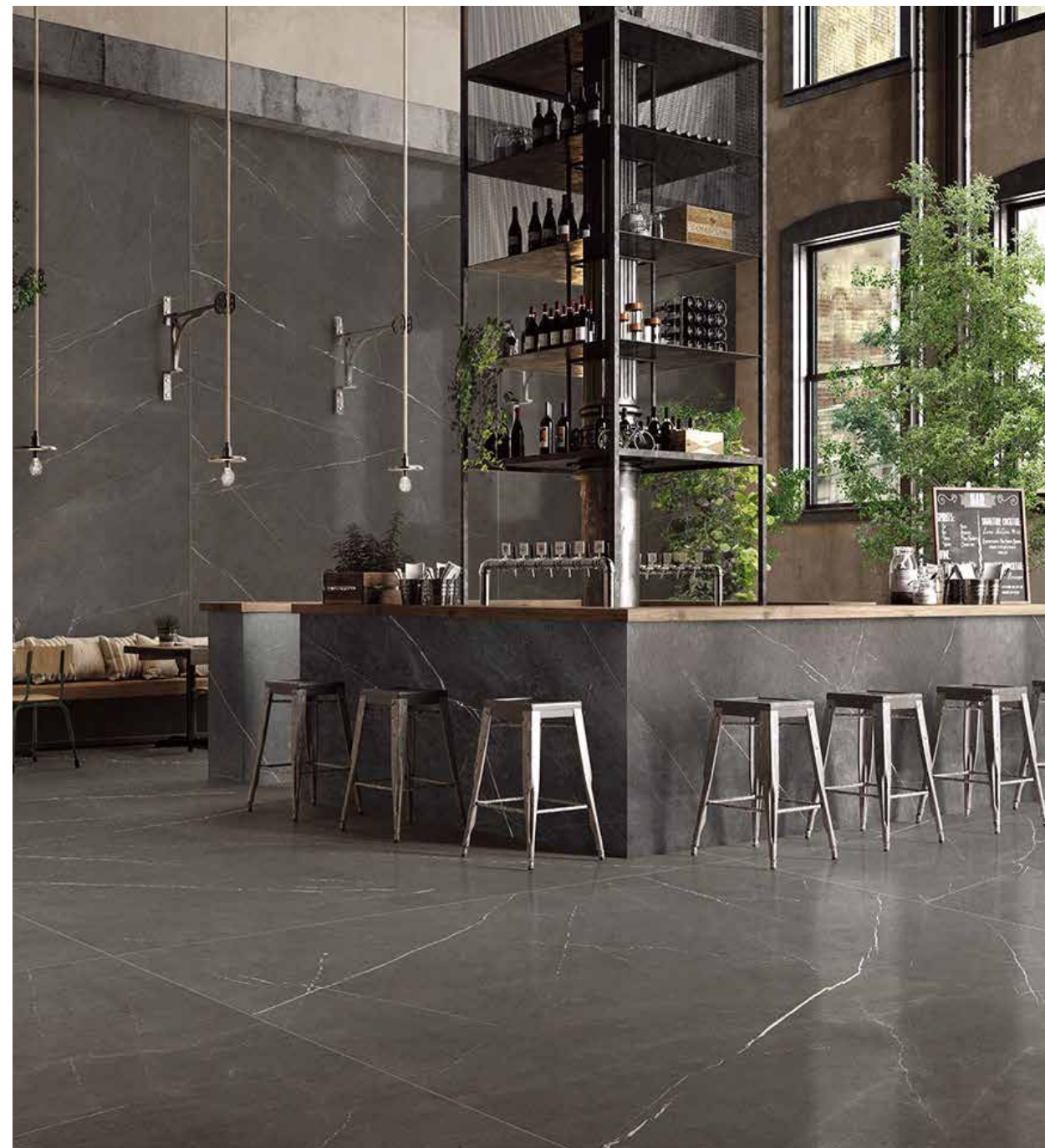
Gris Pulpis GP040



09

LOUNGE

Gris Pulpis GP040
Baltistan Charcoal BC085



10
LOUNGE
Baltistan Charcoal BC085

11
KITCHEN
Baltistan Charcoal
BC085



12
KITCHEN
Baltistan Charcoal
BC085



13
BATHROOM
Baltistan Charcoal
BC085



14
LOUNGE
Luxe Noir LN095

15
LOUNGE
Luxe Noir LN095



16
LOUNGE
Nero Marquinia NM090
Calacatta Snow CS013



17
KITCHEN
Nero Marquinia NM090



18
KITCHEN

Nero Marquinia NM090

19
LIVING ROOM

Sierra Smoke SS080
Nero Marquinia NM090



20
LIVING ROOM
Sierra Smoke SS080



21
LIVING ROOM
Sierra Smoke SS080
Calacatta Snow CS013



22
LIVING ROOM
Urban Concrete UC088



23
LIVING ROOM
Urban Concrete UC088



24
BATHROOM
Urban Concrete UC088

COLORS OF *Locelain*™

MARBLE



Statuario L SL010
P S
Book Match



Calacatta L CL015
P



Calacatta Snow CS013
P S
Book Match



Gris Pulpis GP040
M



Baltistan Charcoal BC085
M

MARBLE



Luxe Noir LN095
M



Nero Marquinia NM090
P M

SOLID



Sierra Smoke SS080
M

CONCRETE



Urban Concrete UC088
M

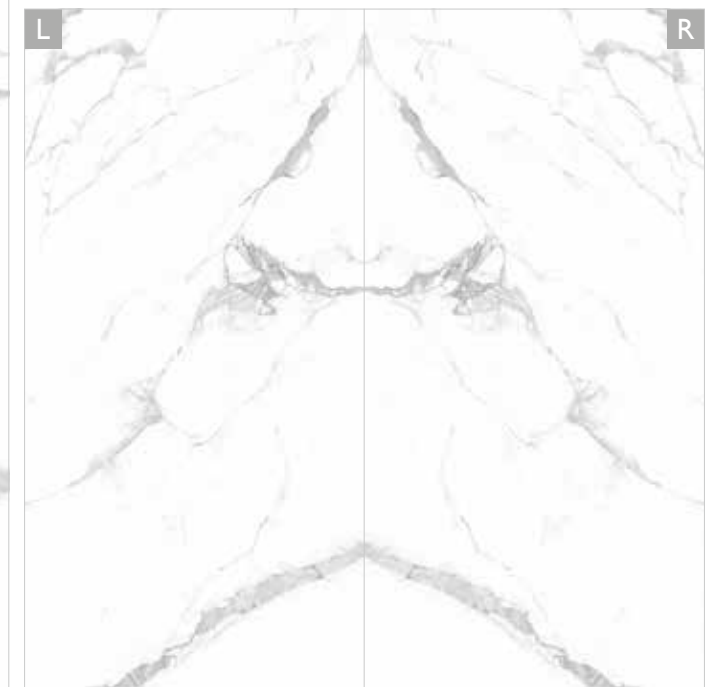


MARBLE

Statuario L SL010



Book match



W 63 × L 126 × T 1/2, T 1/4 (in)

P POLISHED **S** SATIN



MARBLE

Calacatta L CL015



W 63 × L 126 × T 1/2, T 1/4 (in)

P POLISHED



MARBLE

Calacatta Snow CS013



Book match



W 63 × L 126 × T 1/2, T 1/4 (in)

P POLISHED **S** SATIN

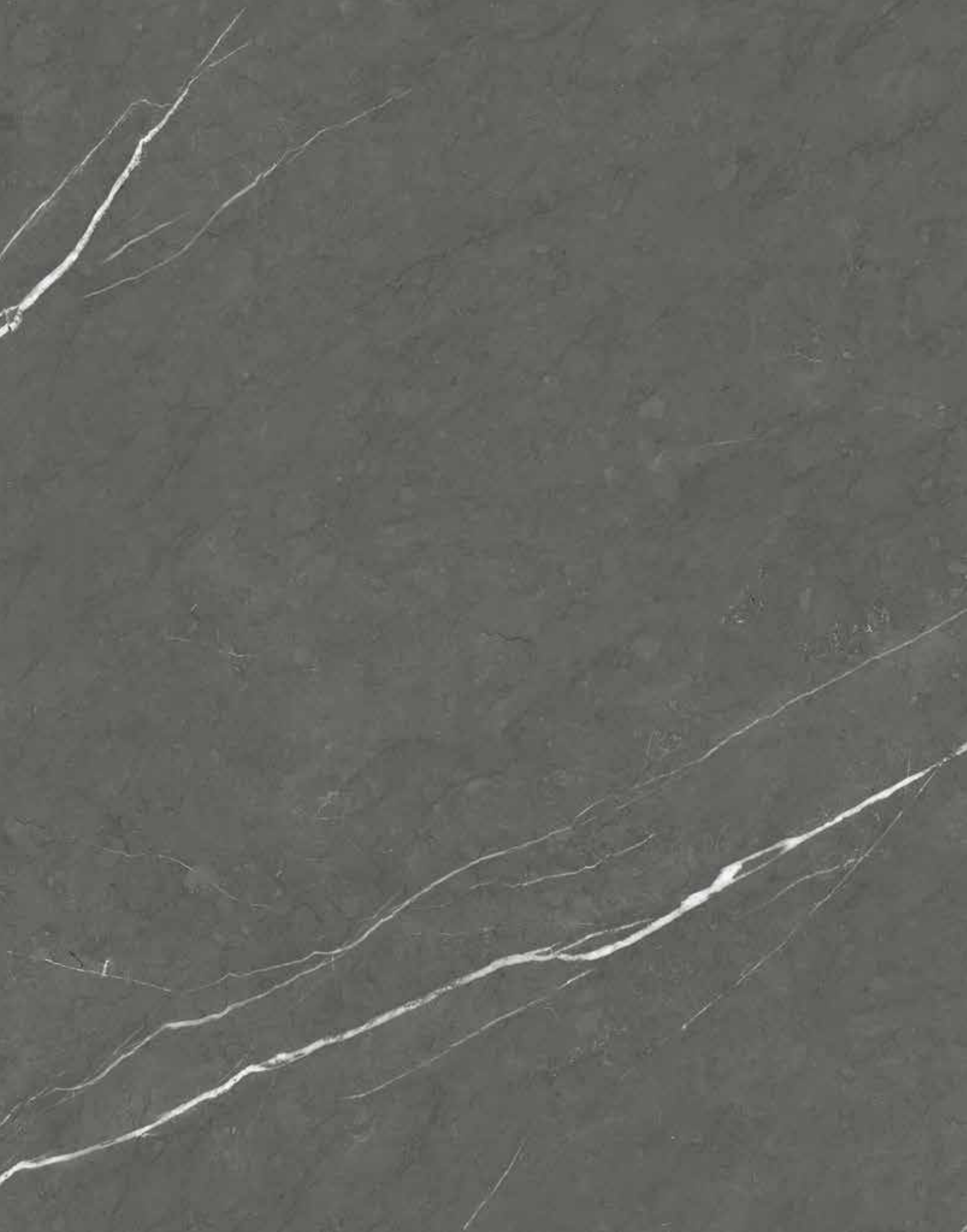
MARBLE

Gris Pulpis GP040



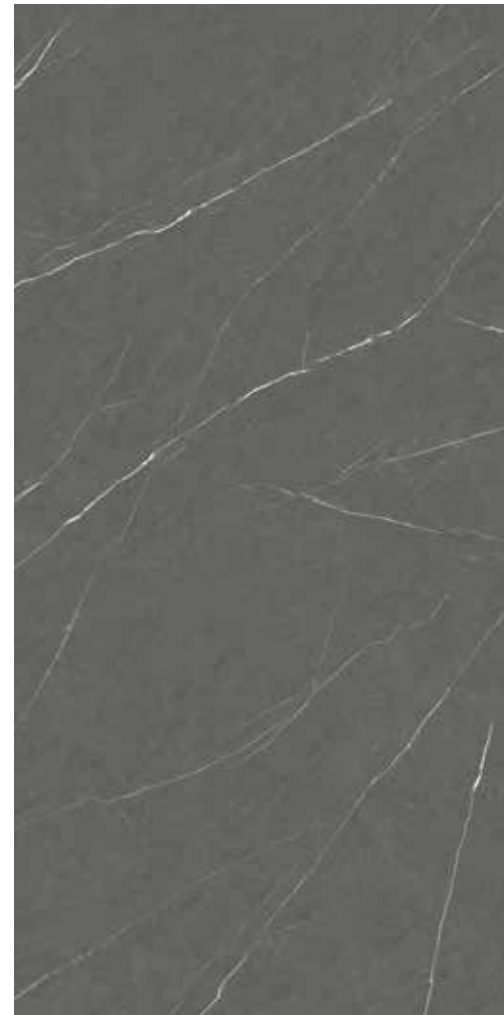
W 63 × L 126 × T 1/2, T 1/4 (in)

 MATTE



MARBLE

Baltistan Charcoal BC085



W 63 × L 126 × T 1/2, T 1/4 (in)

 MATTE



MARBLE

Luxe Noir LN095



W 63 × L 126 × T 1/2, T 1/4 (in)

 MATTE



MARBLE

Nero Marquinia NM090



W 63 × L 126 × T 1/2, T 1/4 (in)

P POLISHED **M** MATTE

SOLID

Sierra Smoke SS080



W 63 × L 126 × T 1/2, T 1/4 (in)

 MATTE

CONCRETE

Urban Concrete UC088



W 63 × L 126 × T 1/2, T 1/4 (in)

 MATTE

CARE & MAINTENANCE

ROUTINE CLEANING

Use a microfiber cloth and hot water to wipe the surface. Locelain countertops can be cleaned with a standard household detergent spray if the stain is hard to remove. Do not use abrasive products, such as scouring pads and steel wool. Avoid cleaning the surface with caustic soda or products containing hydrofluoric acid and its derivatives. If bleach comes into contact with the Locelain surface, use water to rinse immediately.

- Please follow our product care instructions below:
- ☐ Always use a cutting board when preparing food on your Locelain countertop
 - ☐ Scratching your Locelain countertop with sharp objects, such as forks and knives, can cause permanent damage to the surface
 - ☐ Direct contact of ceramic kitchen appliances may scratch Locelain surface

GROUT CARE & STAIN REMOVAL

Remove any residues and clean the surface immediately after Locelain has been installed and grouted. Never use an acidic cleaner on Locelain Caution as they can adversely affect the grout or discolor the surface. Rinse the floor with hot water in order to thoroughly remove the cleaning solution. These steps may be repeated as necessary to remove any surface buildup

Use a gentle detergent to remove any stains. If the stain is severe, use a mixture of warm water and mild detergent.

- We recommend using the following substances to remove stubborn stains that are hard to remove with water and detergent:
- ☐ Non-abrasive mild detergent
 - ☐ Light abrasives
 - ☐ Acidic or alkaline detergents
 - ☐ Solvents
- It is recommended to test a small area with the detergent first before using it on a larger area. Please follow manufacturer's instructions when using cleaning chemicals.

SUGGESTED DETERGENTS FOR LOCELAIN™

Cleaning Locelain generally involves wiping with water or a diluted household detergent. Please choose a detergent carefully as using products that are unsuitable for the surface can sometimes alter the appearance.

TYPES OF DETERGENTS	SOLVENTS (Bleaching solution, Acetone etc.)		ACIDS (Hydrochloric acid etc.)		ALKALINE BASED DETERGENTS (Alkaline-based professional detergents)	
	Matte-Satin	Polished	Matte-Satin	Polished	Matte-Satin	Polished
Beer				<input type="checkbox"/>	<input type="checkbox"/>	
Coffee		<input type="checkbox"/>				
Lime			<input type="checkbox"/>	<input type="checkbox"/>		
Tar	<input type="checkbox"/>	<input type="checkbox"/>				
Concrete			<input type="checkbox"/>	<input type="checkbox"/>		
Candle wax	<input type="checkbox"/>	<input type="checkbox"/>				
Coca Cola		<input type="checkbox"/>				
Glue	<input type="checkbox"/>	<input type="checkbox"/>				
Chewing gum	<input type="checkbox"/>	<input type="checkbox"/>			<input type="checkbox"/>	
Tyre rubber, shoes	<input type="checkbox"/>	<input type="checkbox"/>				
Grease, Oil					<input type="checkbox"/>	<input type="checkbox"/>
Ink	<input type="checkbox"/>	<input type="checkbox"/>				
Nicotine	<input type="checkbox"/>	<input type="checkbox"/>				
Felt-tip pen	<input type="checkbox"/>	<input type="checkbox"/>				
Tomato		<input type="checkbox"/>				
Resins	<input type="checkbox"/>	<input type="checkbox"/>				
Rust			<input type="checkbox"/>	<input type="checkbox"/>		
Nail polish	<input type="checkbox"/>	<input type="checkbox"/>				
Cigarette			<input type="checkbox"/>	<input type="checkbox"/>		
Tea		<input type="checkbox"/>				
Water paint	<input type="checkbox"/>	<input type="checkbox"/>	<input type="checkbox"/>	<input type="checkbox"/>		
Wine		<input type="checkbox"/>				

For the specific certificates please contact LOTTE CHEMICAL directly.

TECHNICAL DATA

LOCELAIN FINISHES

P POLISHED

Locelain in a polished finish is obtained through a progressive mechanical grinding process, which uses micro-abrasive materials with decreasing granularity to create a perfectly reflective surface. Locelain Polished surface is recommended for cladding applications and for various furnishing options.

S SATIN

Locelain Satin creates the perfect synthesis between aesthetics and functionality. Its smooth and soft features keep the surface easy to clean, and is highly recommended for décor finishes or floor applications for the perfect accent to your design.

M MATTE

The rough and rugged texture of Locelain Matte makes this finished surface especially suitable for a wide range of applications, including flooring due to its high slip-resistance advantages.

LOCELAIN THICKNESSES

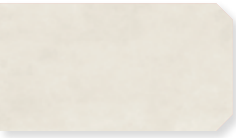
Applications / Thickness	1/4"	1/2"
Indoor Furniture	<input type="checkbox"/>	<input type="checkbox"/>
Outdoor Furniture	<input type="checkbox"/>	<input type="checkbox"/>
Indoor Floor	<input type="checkbox"/>	<input type="checkbox"/>
Indoor Floor (Weight load)		<input type="checkbox"/>
Interior Wall	<input type="checkbox"/>	<input type="checkbox"/>
Exterior Wall	<input type="checkbox"/>	<input type="checkbox"/>
Ventilated Façade	<input type="checkbox"/>	<input type="checkbox"/>
Kitchen Countertop	<input type="checkbox"/>	<input type="checkbox"/>

- ☐ Kitchen countertop applications require additional reinforcement depending on the thickness of the product.
- 1/4" : The whole product area should be reinforced by plywood.
 - 1/2" : If the back of the product has mesh reinforcement, it can improve the quality

COUNTERTOP OPTIONS



A
Partial machining at 45°
with polished visible thickness



B
90 ° vertical machining
with polished



C
Machining at 45° with
assembled rib and removal of
5 mm at the joint



D
Assembly of the rib at the
stop under the top

TECHNICAL SPECIFICATIONS

Locelain's specifications and properties are governed by the European ceramic product quality standards (EN 14411)

TECHNICAL DATA	STANDARD	INTERNATIONAL STANDARDS EN 14411 - G	AVERAGE VALUE		
Sides	EN ISO 10545-2	± 0,3% MAX (± 1,0 mm MAX)	Compliant		
Thickness	EN ISO 10545-2	± 5,0% MAX (± 0,5 mm MAX)	Compliant		
Straightness of sides	EN ISO 10545-2	± 0,3% MAX (± 0,8 mm MAX)	Compliant		
Rectangularity	EN ISO 10545-2	± 0,3% MAX (± 1,5 mm MAX)	Compliant		
Surface flatness	EN ISO 10545-2	± 0,4% MAX (± 1,8 mm MAX)	-		
Water absorption	EN ISO 10545-3	≤ 0,5%	≤ 0,05%		
Flexion resistance	EN ISO 10545-4	S ≥ 700 N (< 7,5 mm) S ≥ 1300 N (> 7,5 mm) R ≥ 35 N/mm².	6 mm S ≥ 900 N R ≥ 40 N/mm²	12 mm S ≥ 3500 N R ≥ 40 N/mm²	
Impact resistance	EN ISO 10545-5	DECLARED VALUE	> 0,85		
Abrasion resistance	EN ISO 10545-6	≤ 175 mm³	< 145 mm³		
Coefficient of linear thermal-expansion	EN ISO 10545-8	-	> 6x10-6C ^{o-1}		
Resistance to thermal shocks	EN ISO 10545-9	PASS ACCORDING EN ISO 10545-1	No Damage		
Frost resistance	EN ISO 10545-12	PASS ACCORDING EN ISO 10545-1	No Damage		
Resistance to chemicals	EN ISO 10545-13	UB MIN.	MATTE A LA HA	SATIN A LA HA	POLISHED A LC HC
Resistance to stains	EN ISO 10545-14	DECLARED VALUE	5		
Lead and cadmium discharge	EN ISO 10545-15	DECLARED VALUE	< THAN INSTRUMENT LIMIT		
Skid resistance	DIN 51130	-	MATTE R9	SATIN -	POLISHED -